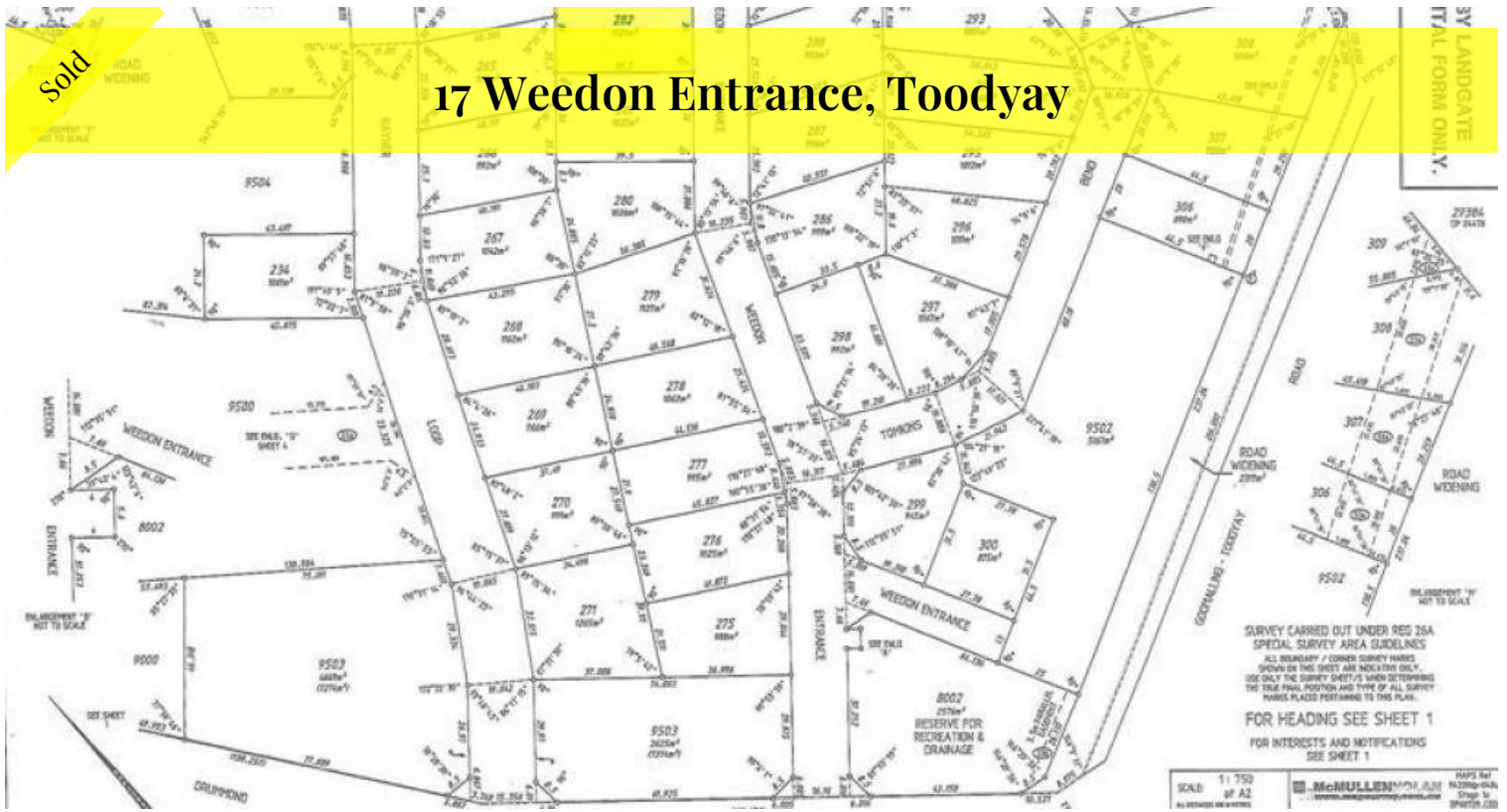


Sold

## 17 Weedon Entrance, Toodyay



### LOT 282 17 Weedon Entrance : Fully Serviced Building Block

One of several blocks in this subdivision owned by the same investors and they **WANT THEM ALL GONE BY CHRISTMAS !!**

At this new price this block is cheap and ripe for a new investor. This is deal time! **ALL OFFERS CONSIDERED.**

Call Bill on 0427426645 / email: [bill@asktonym.com.au](mailto:bill@asktonym.com.au)

This block is in an elevated position with nice views of the surrounding hills and valley.

Just a 5 min walk to the centre of town or the school and only 45 mins by car to Midland or relax and take the scenic Avon Link commuter rail service.

Breathe fresh air and enjoy the relaxed country lifestyle while having the security of living in a rural development on a fully serviced block.

This popular subdivision sold out last year and here's a chance to buy in cheap. Don't miss out!!

Talk to a local agent who can show you over the block today...

1,027 m<sup>2</sup>

Price	SOLD
Property Type	Residential
Property ID	609
Land Area	1,027 m <sup>2</sup>

#### Agent Details

Tony Maddox - 08 9574 2917

#### Office Details

Tony Maddox Real Estate  
100 Stirling Tce Toodyay WA 6566  
Australia  
08 9574 2917



Call Bill on 0427 426 645 for details.

Disclaimer: every precaution has been taken to establish the accuracy of this information. The details should not be taken as a representation in any respect on the part of the Seller or its agent. Interested parties should contact the nominated person or office for full and current details.

The above information provided has been furnished to us by the vendor/s. We have not verified whether or not that information is accurate and do not have any belief in one way or the other in its accuracy. We do not accept any responsibility to any person for its accuracy and do no more than pass it on. All interested parties should make and rely upon their own inquiries in order to determine whether or not this information is in fact accurate.